



2017–20 Acura NSX Emergency Response Guide

Prepared for Fire Service, Law Enforcement, Emergency Medical, and Professional Towing Personnel

This guide has been prepared to assist emergency response professionals in identifying a 2017–2020 NSX vehicle and safely respond to incidents involving this vehicle.

Copies of this guide and other emergency response guides are available for reference or downloading at <https://www.acura.ca/owners/esafety-info>.

For questions, please contact your local Acura dealer or Acura Client Relations at (800) 382-2238.

Acura wishes to thank emergency response professionals for their concern and efforts in protecting Acura clients and the general public.



Contents

Vehicle Identification.....	4
Vehicle Dimensions.....	6
Component Location.....	7
Vehicle Description.....	10
Potential Hazards.....	13
Vehicle Collision.....	14
Submerged Vehicle.....	15
Emergency Procedures High-Voltage Shut Down Procedure	16
Emergency Procedures Extricating Occupants	18
Emergency Towing.....	20
Vehicle Repairs.....	22



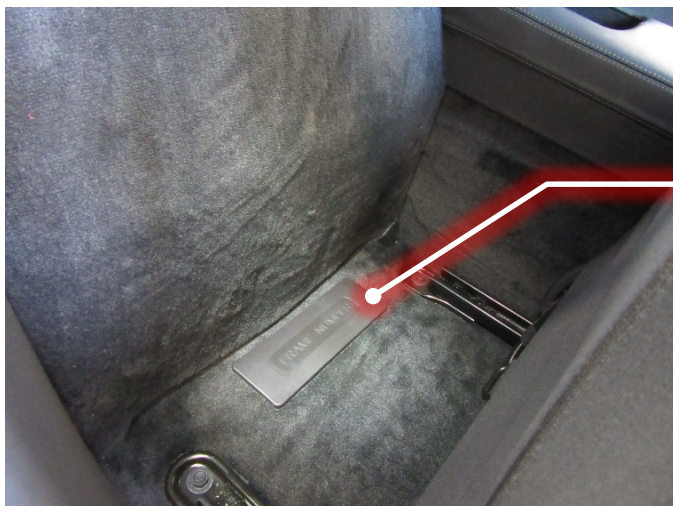
All 2017–20 Acura NSX models are equipped with a hybrid powertrain system and no special markings or emblems are applied to the exterior of the vehicle.



A 2017–20 Acura NSX can also be identified by inspecting the VIN at the three locations shown below.

Digits 4–6 of the VIN will show **NC1** indicating that it is an Acura NSX.

1HG**NC1*******000001



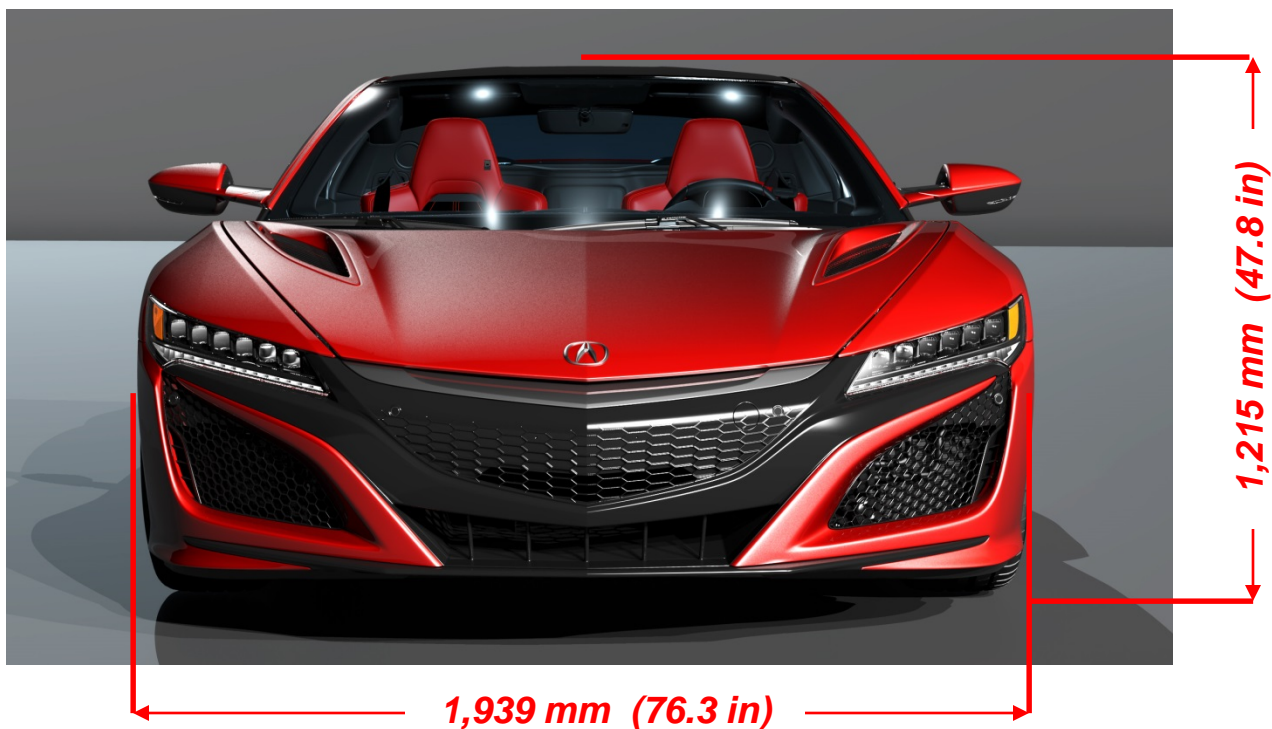
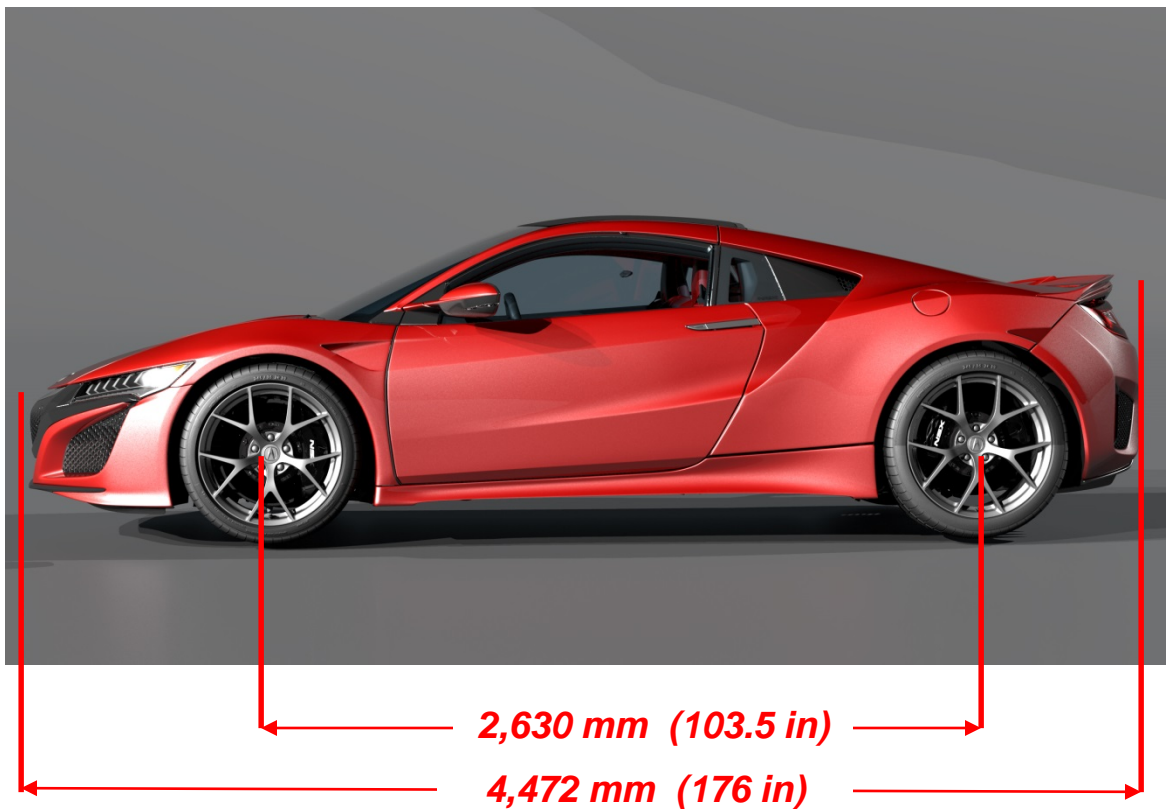
Stamped into the floor panel behind the passenger seat under a plastic panel marked **FRAME NUMBER**



VIN plate located on the lower-right corner of the front windshield



Printed on the VIN label on the driver's door opening

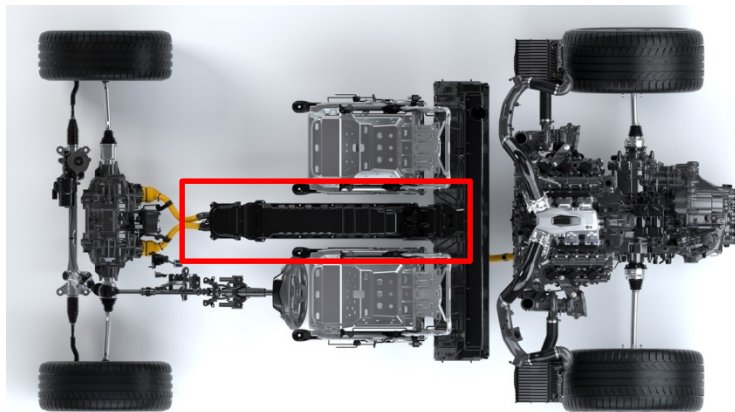


Gross Vehicle Weight Rating	
USA Models	3,803 lbs (1,725 kg) ~ 3,966 lbs (1,799 kg)
Central America Models	1,763 kg ~ 1,804 kg

Key Components

Power Drive Unit (PDU)

The PDU is located below the center console and houses the liquid-cooled inverter. There are no serviceable parts inside, so there is no reason for it to be opened or disassembled.



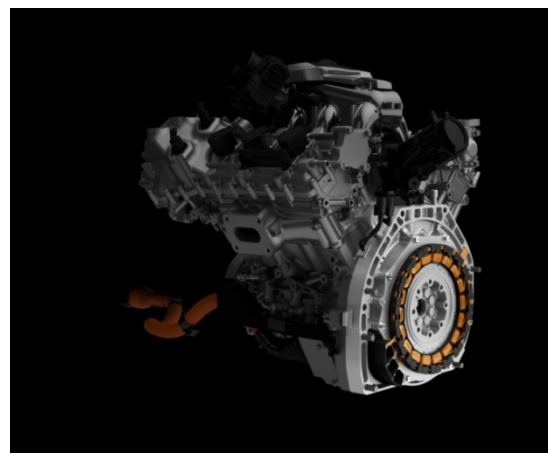
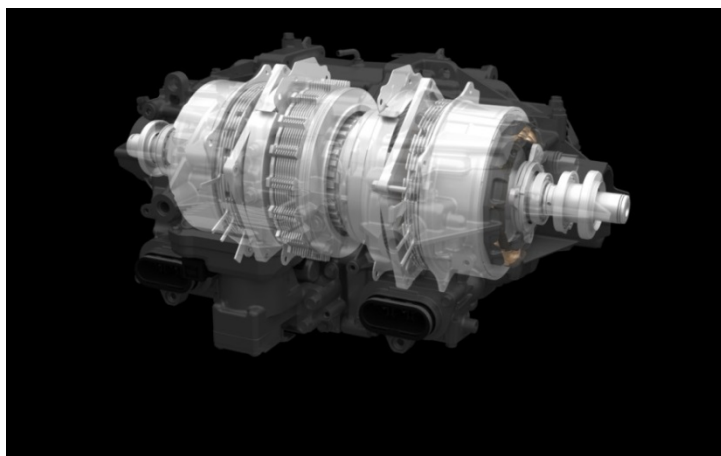
High-Voltage Cables

High voltage flows through easy-to-identify, heavy-duty orange cables. These cables are purposely routed through areas away from the usual cut points.



Electric Motor/Generator

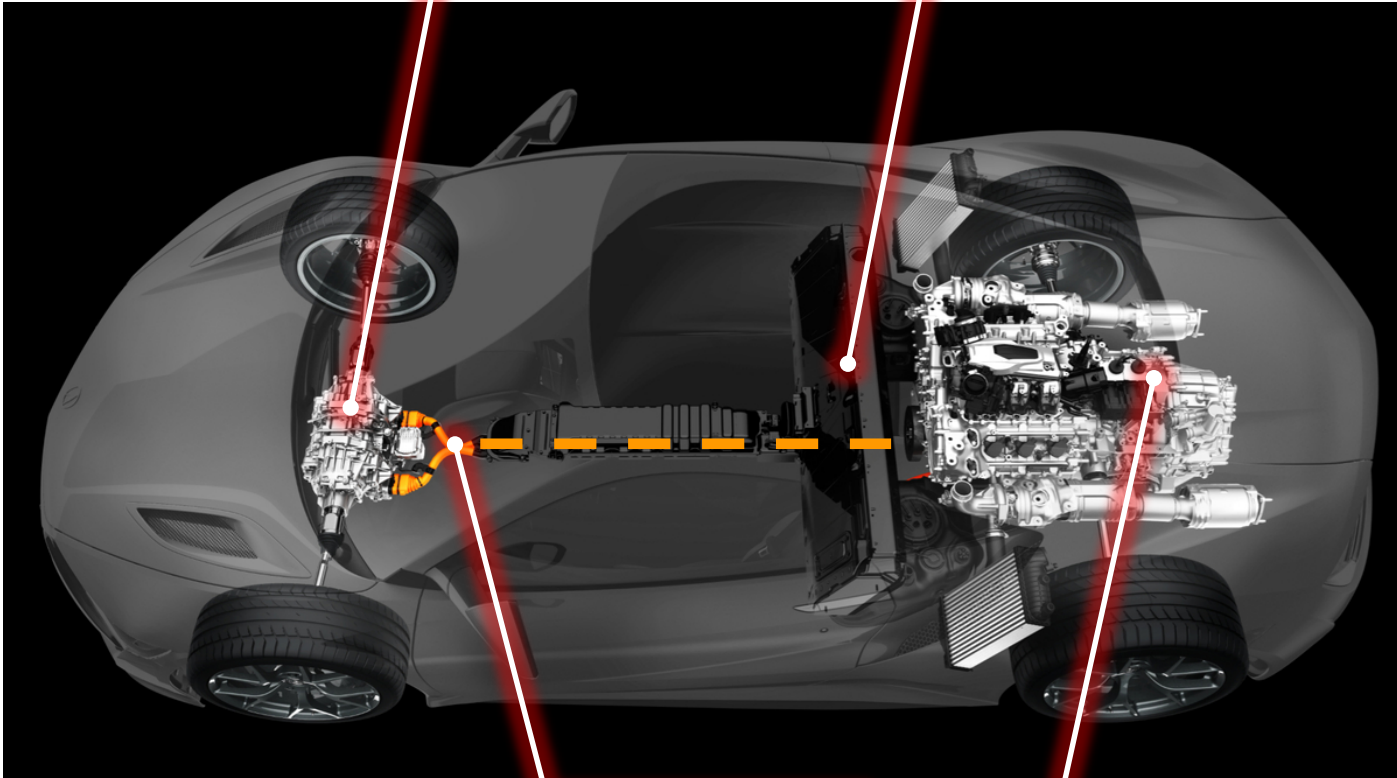
The Acura NSX incorporates one electric motor/generator that is attached to the gasoline engine and transmission and two electric motors located between the front wheels in the twin motor unit.



Key Components

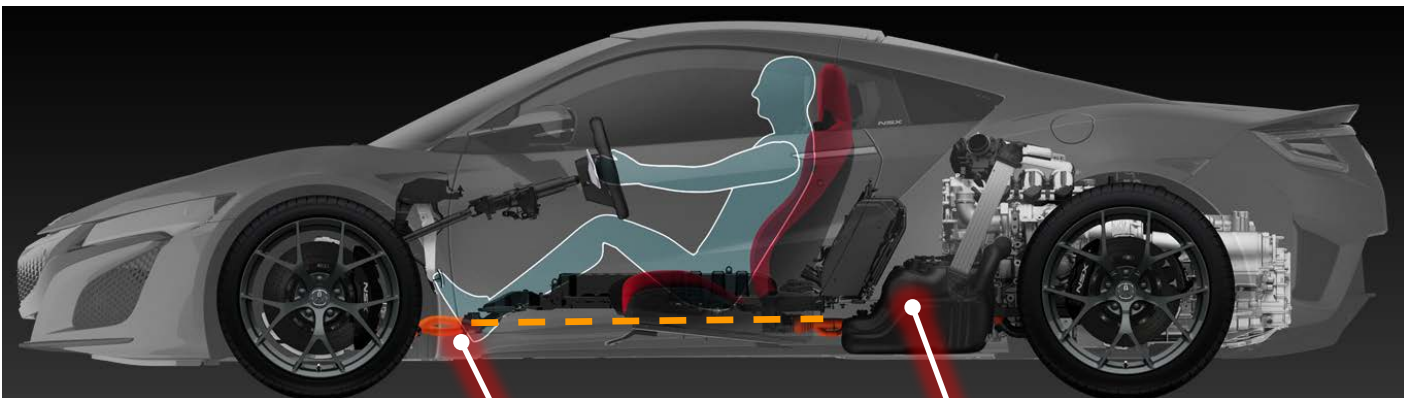
Front Electric Motor

High-Voltage Battery



High-Voltage Cables

Rear Electric Motor and Generator



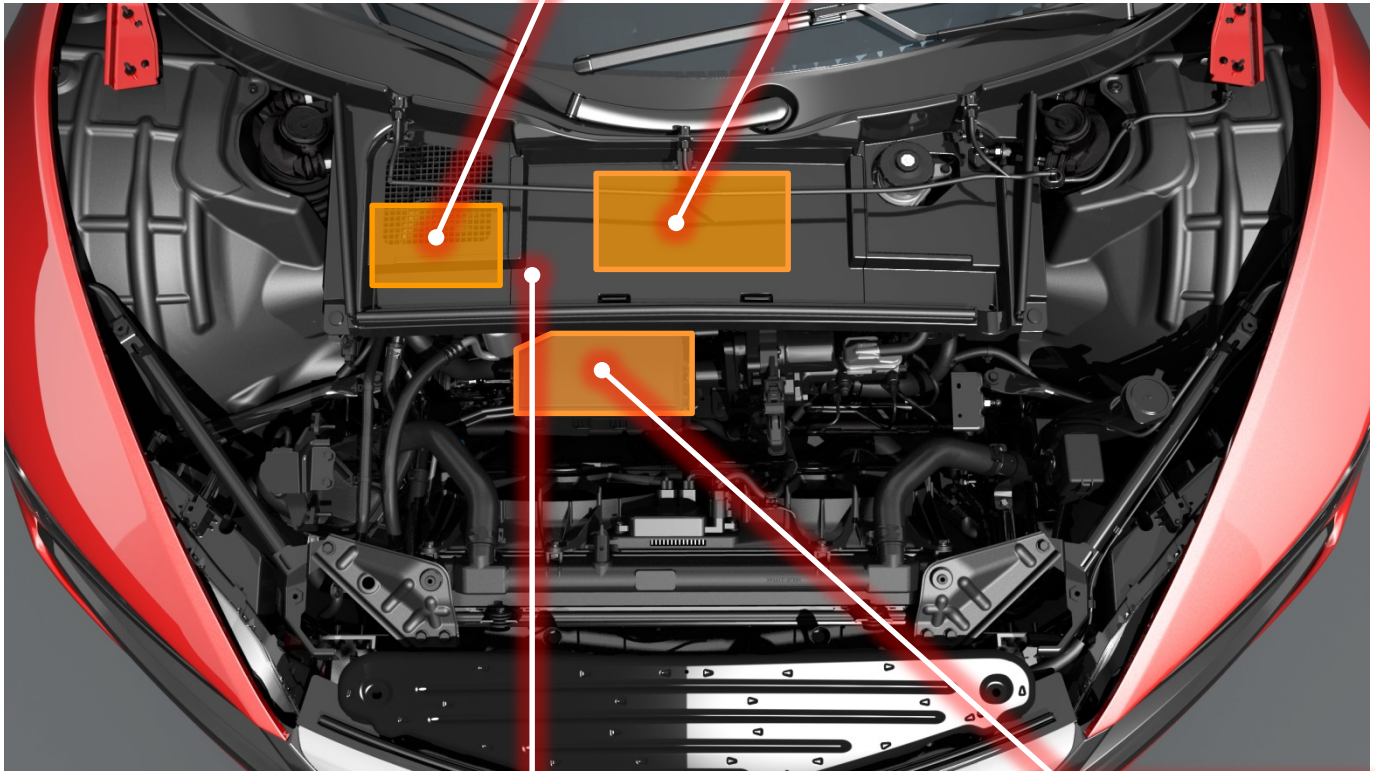
Fuel Tank

High-Voltage Cables

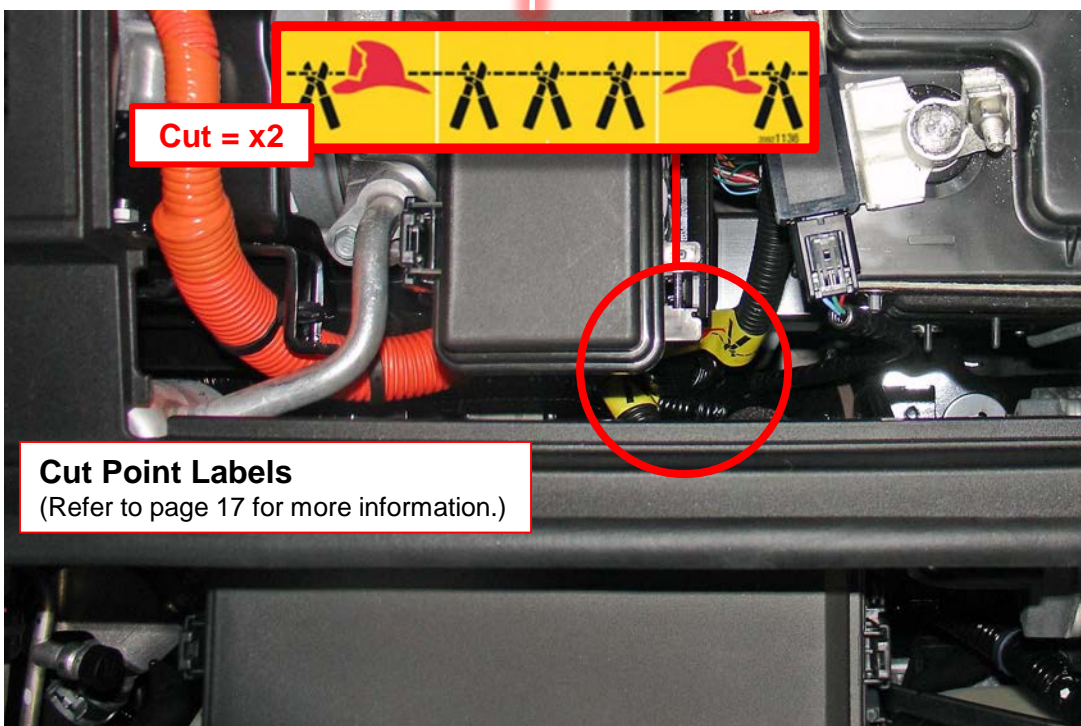
Key Components

High-Voltage A/C Compressor (Under cover)

12-Volt Battery (Under cover)



Fuse Box



Cut = x2

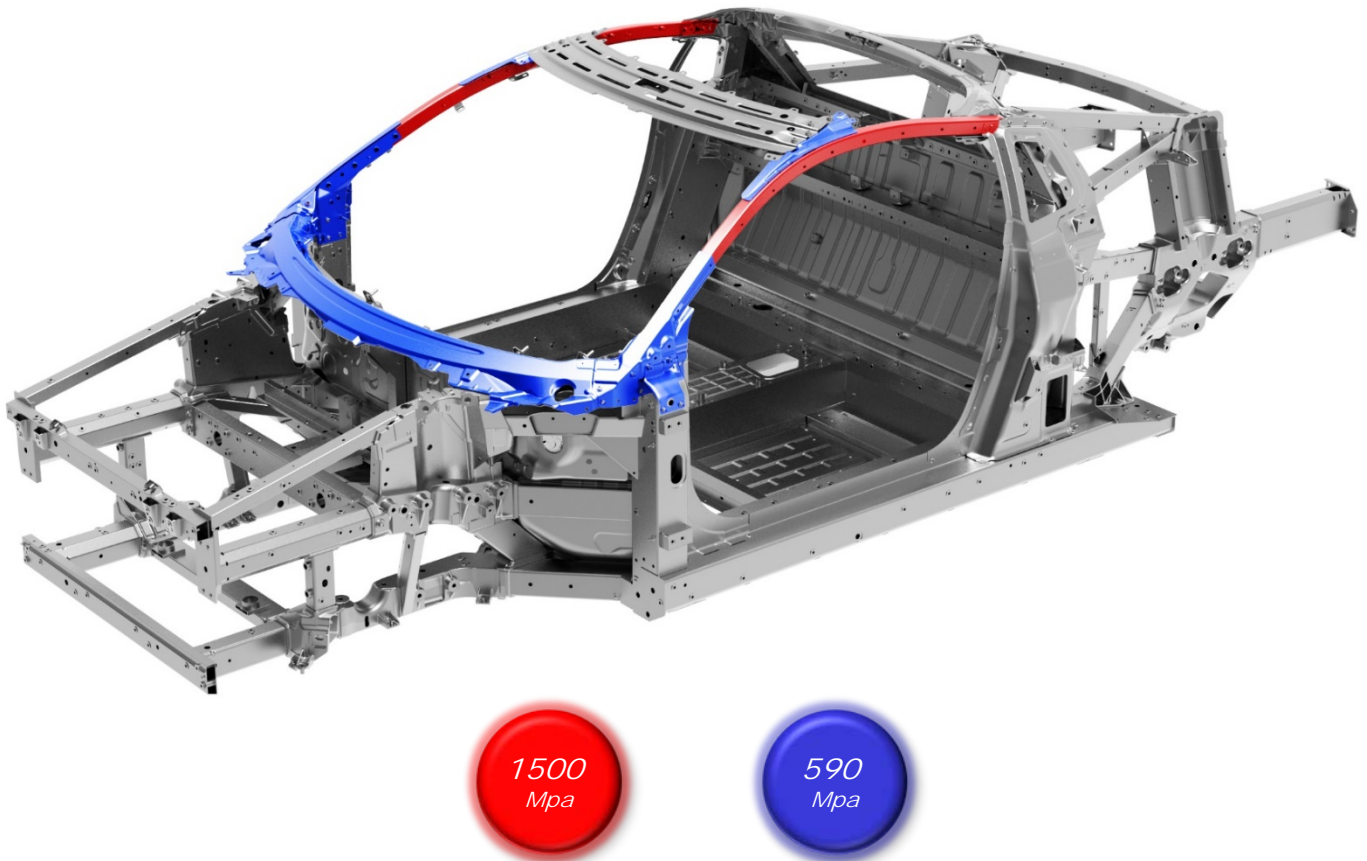
Cut Point Labels

(Refer to page 17 for more information.)

High-Strength and Ultra-High-Strength Steel

The frame of the Acura NSX is comprised mostly of aluminum however, high-strength and ultra-high-strength steel is used in the colored areas.

The body panels are comprised of various materials such as aluminum, plastic, and other composites.



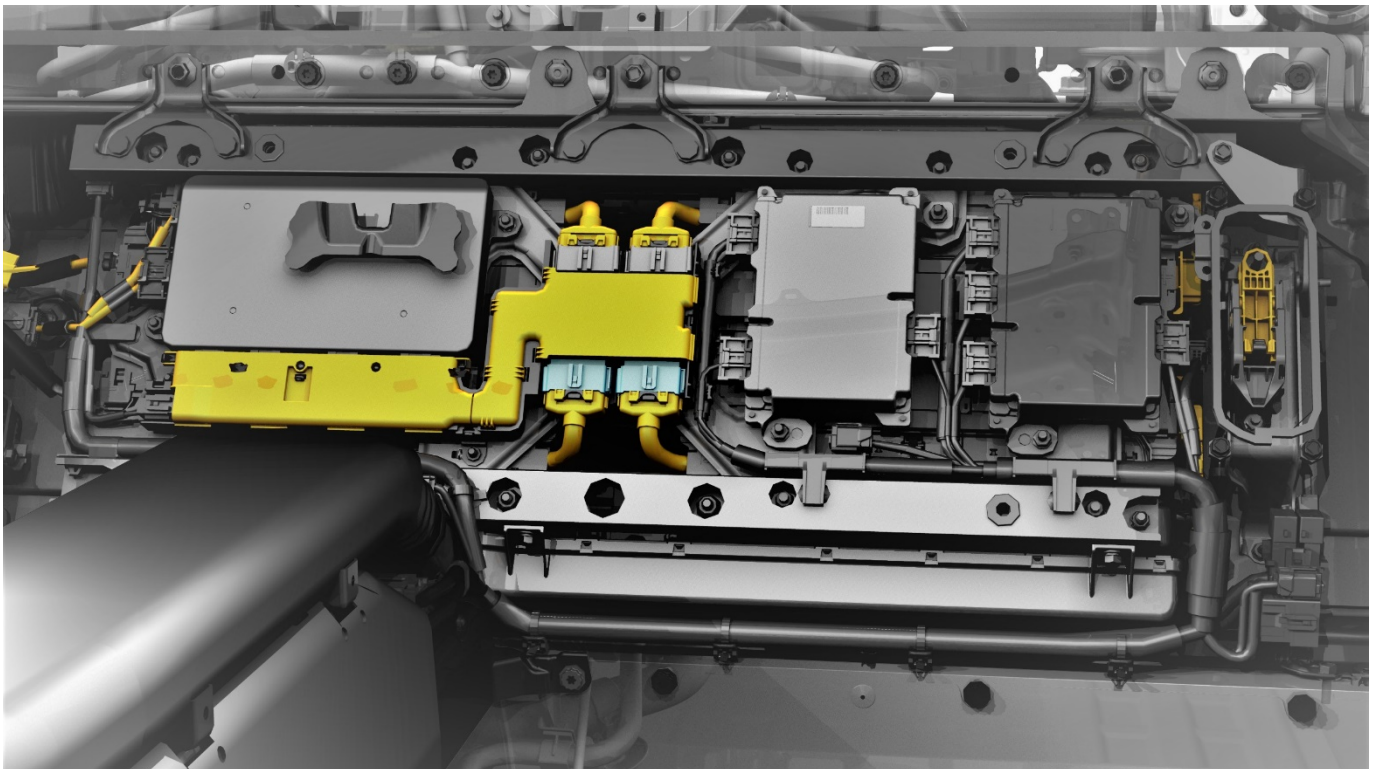
12-Volt Battery

A conventional 12 volt battery is located under the front hood of the vehicle. This battery powers the airbags, lights, audio system, and other standard 12 volt system components. In an emergency situation, it may be necessary to disconnect or cut the 12 volt battery negative cable.



High-Voltage Battery

The high-voltage battery is located in a well protected area behind the seats. The HV battery ECU, the battery contactors, a forced air cooling system, and other battery system controls are housed within the battery pack.



Seatbelts and Airbags

The Acura NSX is equipped with lap/shoulder belts in both seating positions. The seat belts are equipped with pyrotechnically activated tensioners that help tighten the seat belt in a crash.

In addition, the Acura NSX is equipped with the following airbags:

- Front Airbags - Driver / Passenger
- Side Airbags - Driver / Passenger
- Side Curtain Airbags - Driver / Passenger
- Knee Airbag - Driver

In a collision severe enough to deploy one or more of the airbags, the Acura NSX electrical system is designed to automatically open the high-voltage electrical contactors. This disconnects the high-voltage battery from the other high-voltage components and stops the flow of electricity in the high-voltage cables.

Responders should always assume, however, that the HV system is powered on and take the appropriate action described later in this guide to power off the system.

It takes up to 3 minutes for the airbags and tensioners to power off after the 12-volt system has been turned off by following the emergency shutdown procedures provided later in this guide.



Lithium-ion Battery Fumes or Fire

A damaged high-voltage lithium-ion battery can emit toxic fumes and the organic solvent used as electrolyte is flammable and corrosive, so responders should wear appropriate personal protective equipment. Even after a lithium-ion battery fire appears to have been extinguished, a renewed or delayed fire can occur. The battery manufacturer cautions responders that extinguishing a lithium-ion battery fire will take a large and sustained volume of water.

Responders should always ensure that an Acura NSX with a damaged battery is kept outdoors and far away from other flammable objects in order to minimize the possibility of collateral fire damage should the battery catch on fire.



Lithium-ion Battery Fluid

Avoid contact with the high-voltage battery fluid. The high-voltage battery contains a flammable electrolyte that could leak as a result of a severe crash. Avoid any skin or eye contact with the electrolyte as it is corrosive. If you accidentally touch it, flush your eyes or skin with a large quantity of water for at least 5 minutes and seek medical attention immediately.

Electric Shock

Unprotected contact with any electrically charged high-voltage component can cause serious injury or death. Receiving an electric shock from an Acura NSX, however, is highly unlikely because of the following:

- Contact with the battery module or other high-voltage components can only occur if they are damaged and the contents are exposed or if they are accessed without following proper precautions.
- Contact with the electric motor can only occur after one or more components are removed.
- The high-voltage cables can be easily identified by their distinctive orange color and contact with them can be avoided.

If severe damage causes high-voltage components to become exposed, responders should take appropriate precautions and wear appropriate insulated personal protective equipment.

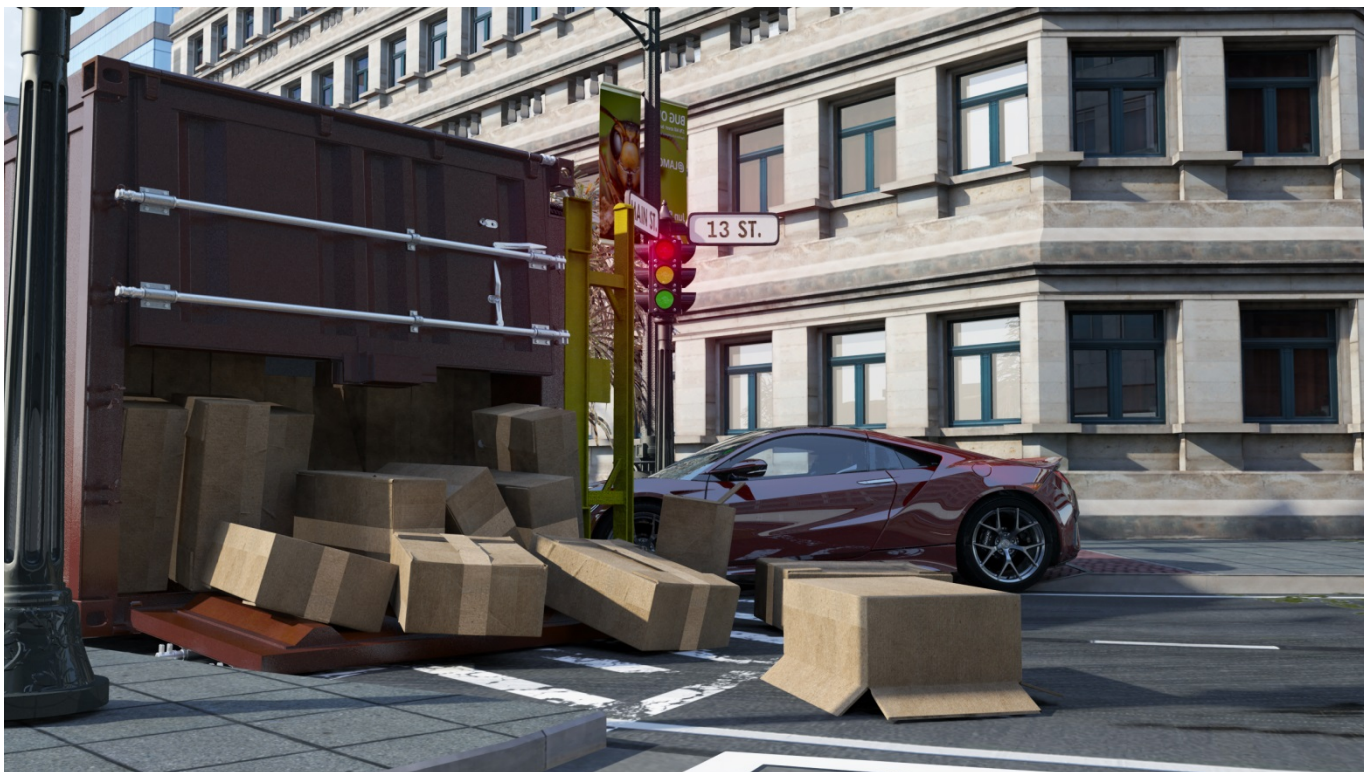


Vehicle Collision

In the event of a crash, the airbag control unit makes a judgment based on input from the impact sensors. If the input values meet various threshold requirements, the SRS (Supplemental Restraint System) unit sends a signal to the high-voltage battery ECU. The high-voltage battery ECU then turns off the high-voltage battery contactors, stopping the flow of electrical current from the high-voltage battery.

When responding to an incident involving an Acura NSX, we recommend that emergency personnel follow their organization's standard operating procedures for assessing and dealing with vehicle emergencies.

Given our knowledge of the Acura NSX, we also recommend that responders follow the procedures on the following pages to avoid potentially lethal shock by high voltage.



Submerged Vehicle

If an Acura NSX is submerged or partly submerged in water, first pull the vehicle out of the water. Then, shut down the high-voltage system using one of the two procedures described on the following pages.

Aside from severe damage to the vehicle, there is no risk of electric shock from touching the vehicle's body or framework — in or out of the water. If the high-voltage battery was submerged, you may hear noises from the battery as the cells are being discharged from shorting.



Preventing Current Flow Through High-Voltage Cables

Before attempting to rescue occupants or move a damaged Acura NSX, you should reduce the potential for current to flow from the electric motor or the HV battery through the high-voltage cables.

There are **two recommended methods** for preventing current flow. These are discussed on the following pages.

BEST METHOD for High-Voltage Shutdown

Push and hold the ENGINE START/STOP button for 3 seconds.

This simple action turns off the gasoline engine and immediately shuts down the high-voltage system controllers, thereby preventing current flow into the cables. It also cuts power to the airbags and the seat belt tensioners, though these pyrotechnic devices have up to a 3-minute deactivation time.

To prevent accidental restarting, you must remove the keyless remote from the vehicle and move it at least 20 feet away.

If you cannot locate the keyless remote, you should also do the SECOND-BEST METHOD for high-voltage shutdown (for preventing high-voltage current flow) on the following page.



SECOND-BEST METHOD for High-Voltage Shutdown

Locate and cut the negative 12-volt battery cable and the DC to DC converter cable.

Together, cutting the negative 12-volt battery cable and cutting the DC to DC converter cable turns off the gasoline engine and immediately shuts down the high-voltage system controllers, thereby preventing current flow into the high-voltage cables.

1. Pull the hood release handle located on the driver's left kick-panel.



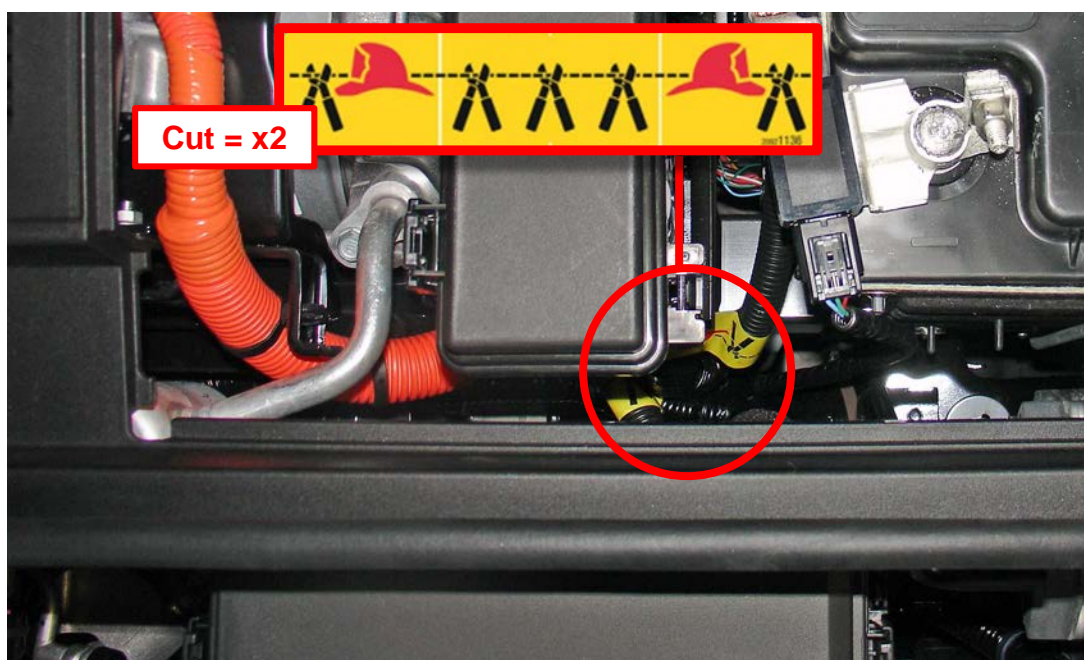
2. Locate the hood latch lever, push the lever, and lift the hood.



3. Locate the two cut point labels shown and cut them.

When cutting the cables, do not allow the cutting tool to contact any surrounding metal parts; electrical arcing could occur, which can ignite any flammable vapors.

NOTE: If you cannot do either method to stop the engine and prevent current flow into the high-voltage cables, use extreme care and do not touch damaged cables as they may be electrically charged.



Extricating Occupants

If you need to cut the vehicle body or use Jaws-of-Life equipment to remove occupants, be sure to stay within the cut zone indicated in the illustration below.



Extricating Occupants

Under normal operation, the outer door handle automatically pops out when you are carrying the remote and get near the door. The outer door handle also pops out when the unlock button is pressed on the remote.




In the event of an emergency, simply push in the front edge of the outer door handle so that the handle pops out, then pull the outer handle toward you and open the door. The door will open as long as the door is unlocked.



Emergency Towing

The only approved method is to use a flat-bed tow truck or trailer. Towing the vehicle with two wheels on the ground will damage parts of the electric powertrain system. If the vehicle is damaged, it must be transported on a flat-bed tow truck or trailer.

Be aware that when rolling a damaged Acura NSX with the front (drive) wheels on the ground, the electric motor can produce electricity and remains a potential source of electric shock even when the high-voltage system is turned off.

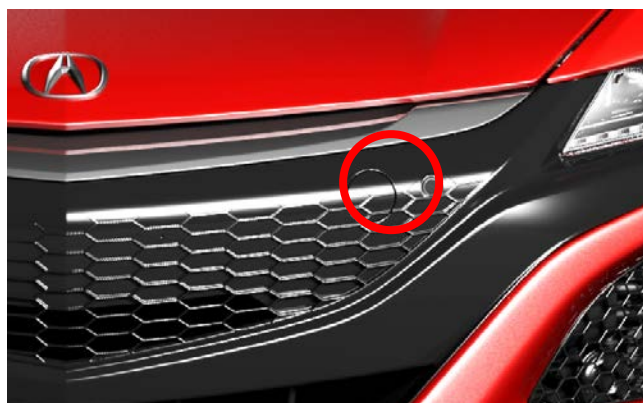
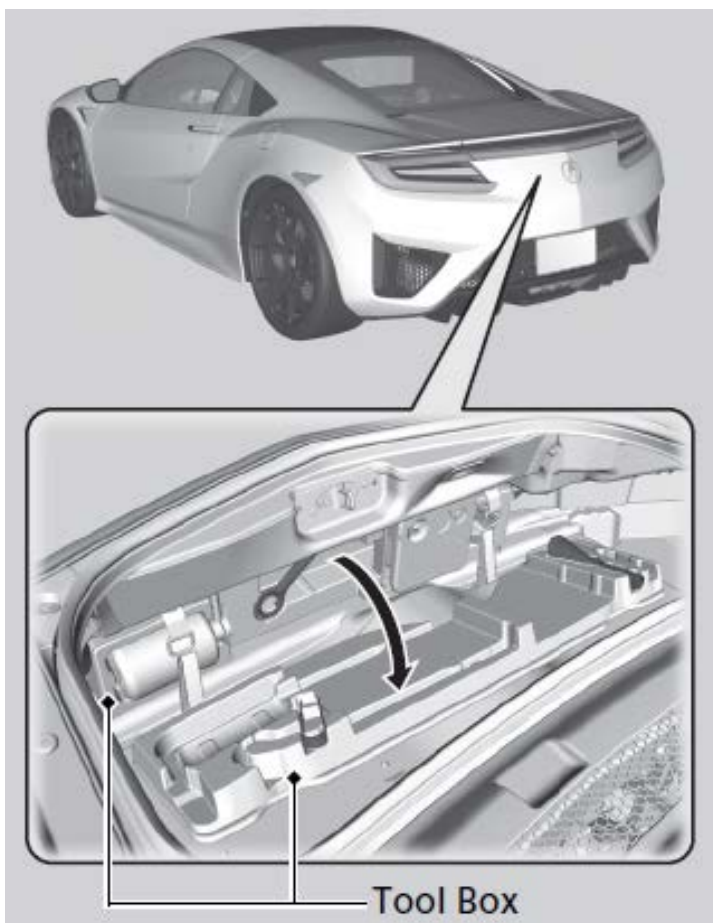
Towing Method	Type
	Flat-Bed Tow Truck Equipment
	Cable Type Equipment
	Front Wheel Lift Equipment

Neutral Hold Mode

If you need to load the vehicle onto a flat-bed truck, you can bypass Auto Park Mode by setting Neutral Hold Mode.

1. With the engine running, apply the brake pedal and select Neutral on the electronic gear selector.
2. Within **5 seconds**, press the ENGINE START/STOP button. The ignition goes to ACCESSORY and the engine shuts off.
3. Look for the message **Shift to Park** in the driver information interface and **N** in the instrument panel. This tells you that Neutral Hold Mode is set. You will then have **15 minutes** before the transmission automatically shifts to Park and the ignition goes to OFF. You may now exit the vehicle.

The tow hook is located within the tool kit located in the trunk. To install the tow hook, remove the cap from the front bumper using a flat-tip screwdriver. Insert the tow hook, then turn it clockwise until it is snug.



Acoustic Vehicle Alerting System

Starting with the 2020 model year, the Acura NSX is equipped with a acoustic vehicle alerting system and alerts pedestrians that it is approaching with an audible sound when the speed is about 16 mph or less. When pushing the Acura NSX with the vehicle in the ON mode, you will hear this sound as the vehicle is being moved.

Dealer Inspection and Repair

A damaged Acura NSX should be taken directly to an authorized Acura dealer for a thorough inspection and repairs. For questions, please contact your local Acura dealer or Acura Client Relations at 1-888-946-6329.

High-Voltage Battery Recycling

The high-voltage lithium-ion battery requires special handling and disposal. If disposal is necessary, please contact your local Acura dealer or the Canadian Transport Emergency Centre (CANUTEC) at 1 (888) 226-8832 for assistance.



BLUE SKIES FOR
OUR CHILDREN