



FEATURES & SPECIFICATIONS

POWERTRAIN

ENGINE	RDX	RDX A-SPEC™	RDX PLATINUM ELITE A-SPEC™
Drivetrain	Super Handling All-Wheel Drive™ ¹ (SH-AWD®)	Super Handling All-Wheel Drive™ ¹ (SH-AWD®)	Super Handling All-Wheel Drive™ ¹ (SH-AWD®)
Engine type	2.0-litre 4-cylinder	2.0-litre 4-cylinder	2.0-litre 4-cylinder
Turbo type	Mono-scroll	Mono-scroll	Mono-scroll
Displacement (cc)	1996	1996	1996
Horsepower ¹ (@ rpm)	Up to 272 hp @ 6500 rpm	Up to 272 hp @ 6500 rpm	Up to 272 hp @ 6500 rpm
Torque ¹ (lb.-ft. @ rpm)	Up to 280 lb.-ft. @ 1600–4500 rpm	Up to 280 lb.-ft. @ 1600–4500 rpm	Up to 280 lb.-ft. @ 1600–4500 rpm
Valve train	16-VALVE, DOHC, VTEC®	16-VALVE, DOHC, VTEC®	16-VALVE, DOHC, VTEC®
Compression ratio	9.8:1	9.8:1	9.8:1
Fuel injection	Direct injection	Direct injection	Direct injection
Drive-by-Wire Throttle System™	•	•	•
Idle stop	•	•	•
Towing capacity ² (kg)	680	680	680
Remote engine starter with vehicle feedback	•	•	•

TRANSMISSION

10-speed automatic transmission (AT)	Shift-by-Wire (SBW)	Shift-by-Wire (SBW)	Shift-by-Wire (SBW)
Sequential SportShift® paddle shifters	•	•	•
Final drive ratio	4.17:1	4.17:1	4.17:1

FUEL ECONOMY

City/Hwy/Combined ³ (L/100 km)	11.0 / 8.6 / 9.9	11.3 / 9.1 / 10.3	11.3 / 9.1 / 10.3
Recommended fuel	Premium unleaded (91 Octane)	Premium unleaded (91 Octane)	Premium unleaded (91 Octane)
Capless fueling system	•	•	•
Fuel tank capacity (L)	64.7	64.7	64.7

CHASSIS

BRAKES	RDX	RDX A-SPEC™	RDX PLATINUM ELITE A-SPEC™
Power-assisted, ventilated front/solid rear disc brakes	•	•	•
Electronic Parking Brake (EPB) with automatic brake hold	•	•	•

DIMENSIONS

Stabilizer bars – front/rear (mm)	30 x 5 (tubular) / 23 (solid)	30 x 5 (tubular) / 23 (solid)	30 x 5 (tubular) / 23 (solid)
Steering wheel turns – lock-to-lock	2.23	2.23	2.23
Turning diameter – curb-to-curb (m)	12.07	12.11	12.11

TIRES

Tire Pressure Monitoring System (TPMS)	•	•	•
Tires	P235/55 R19 101H	P255/45 R20 101V	P255/45 R20 101V
Tire Repair Kit (TRK)	•	•	•

WHEELS

19" aluminum-alloy wheels	Berlina Black		
20" aluminum-alloy wheels		A-SPEC™ design, Shark Grey	Berlina Black, machine-finished

MISCELLANEOUS

Dual-pinion Electric Power Steering (EPS)	•	•	•
Integrated Dynamics System (IDS)	Snow / Comfort / Normal / Sport	Snow / Comfort / Normal / Sport	Snow / Comfort / Normal / Sport
MacPherson strut front suspension	•	•	•
Multi-link independent rear suspension	•	•	•
Adaptive Damper System			•
Amplitude Reactive Damper	•	•	
Agile Handling Assist™	•	•	•

SAFETY & DRIVER-ASSISTIVE TECHNOLOGY

ACURAWATCH®

Adaptive Cruise Control (ACC) ^{4,5}	With Low-Speed Follow	With Low-Speed Follow	With Low-Speed Follow
Auto high beam headlights ⁴	•	•	•
Blind Spot Information (BSI) system ^{4,6}	•	•	•
Collision Mitigation Braking System™ ^{4,7} (CMBS®)	•	•	•
Rear Cross Traffic Monitor (CTM) ^{4,8}	•	•	•
Forward Collision Warning (FCW) ^{4,9}	•	•	•
Front and rear low-speed Automatic Emergency Braking ⁴ (AEB)		•	•
Lane Departure Warning (LDW) ^{4,10}	•	•	•
Lane Keeping Assist System (LKAS) ^{4,11}	•	•	•
Road Departure Mitigation (RDM) system ^{4,12}	•	•	•
Traffic Sign Recognition (TSR) system ^{4,13}	•	•	•

SAFETY & SECURITY

Advanced Compatibility Engineering™ (ACE™) body structure	•	•	•
Advanced front airbags (SRS)	•	•	•
Front side airbags	•	•	•
Front knee airbags	•	•	•
Side curtain airbags	•	•	•
Rear seat reminder ¹⁴	•	•	•
Seat belt reminder for all seating positions	•	•	•
Lower Anchors and Tethers for Children (LATCH)	Lower Anchors (2nd row outboard), Tether Anchors (2nd row all)	Lower Anchors (2nd row outboard), Tether Anchors (2nd row all)	Lower Anchors (2nd row outboard), Tether Anchors (2nd row all)
Childproof rear door locks	•	•	•
Anti-lock Braking System ^{4,15} (ABS)	•	•	•
Brake Assist	•	•	•
Electronic Brake-force Distribution (EBD)	•	•	•

SAFETY & SECURITY [CONT]		RDX	RDX A-SPEC™	RDX PLATINUM ELITE A-SPEC™
Vehicle Stability Assist ^{4,6} (VSA®) with Traction Control		•	•	•
Immobilizer theft-deterrent system		•	•	•
Security system		•	•	•
DRIVER CONVENIENCE				
Multi-angle rearview camera ^{4,7} with dynamic guidelines		•	•	
Surround view camera system ^{4,8}				•
Camera washer	Rear		Rear	Rear
Parking sensors ⁴			Front (4), Rear (4)	Front (4), Rear (4)
Head-up display				•
Front wiper de-icer		•	•	•
Rear window defroster		•	•	•
Wipers	Variable intermittent		Rain-sensing	Rain-sensing
Hill Start Assist ^{4,9}		•	•	•
EXTERIOR				
LIGHTING				
Jewel Eye® LED headlights		•	•	•
Chicane™ LED Daytime Running Lights (DRL)		•	•	•
LED fog lights			•	•
LED taillights		•	•	•
LED brake lights		•	•	•
LED puddle lights			•	•
LED cargo lights		•	•	•
SIDE MIRRORS				
Heated power-adjusting side mirrors	Integrated turn signal indicators, reverse auto tilt-down	Integrated turn signal indicators, reverse auto tilt-down, power-folding	Integrated turn signal indicators, reverse auto tilt-down, power-folding, auto-dimming	
Side mirror colour	Body-coloured	Body-coloured	Gloss Black	
MISCELLANEOUS				
Door handles	Body-coloured	Body-coloured	Gloss Black	
A-SPEC™ exterior Sport Appearance Package		•	•	
Exhaust finisher	Dual-rectangle	Dual-round	Dual-round	
Splash guards			Front and rear, Gloss Black	
INTERIOR				
ACCESS				
Keyless access system	Front doors and trunk	Front/rear doors and trunk	Front/rear doors and trunk	
Power tailgate	Programmable height	Programmable height, hands-free access	Programmable height, hands-free access	
SEATS				
Seat material	Leatherette	Perforated Milano premium leather and Ultrasuede®-trimmed interior with contrast stitching and piping	Perforated Milano premium leather	
Driver Seat	12-way power adjustment including 4-way power lumbar support	12-way power adjustment including 4-way power lumbar support	16-way power adjustment including 4-way power lumbar support	
Passenger Seat	12-way power adjustment including 4-way power lumbar support	12-way power adjustment including 4-way power lumbar support	16-way power adjustment including 4-way power lumbar support	
4-way adjustable front seat headrests	•	•	•	
Memory system for driver's seat and side mirrors	Two position	Two position	Two position	
Heated front seats	•	•	•	
Ventilated front seats		•	•	
REAR SEATS				
Heated second-row seats			•	
60/40 split-folding rear seat	•	•	•	

STEERING WHEEL	RDX	RDX A-SPEC™	RDX PLATINUM ELITE A-SPEC™
Steering wheel-mounted controls	Heated, leather-wrapped	Heated, leather-wrapped, A-SPEC™ flat bottom	Heated, leather-wrapped, A-SPEC™ flat bottom
Tilt and telescopic steering column	•	•	•
Steering wheel-mounted paddle shifters	•	•	•

WINDOWS			
Acoustic laminate glass	Windshield	Windshield, front	Windshield, front, rear
One-touch power panoramic moonroof	With tilt feature and power sunshade	With tilt feature and power sunshade	With tilt feature and power sunshade
Power windows with auto-up/down	Front, 2nd row	Front, 2nd row	Front, 2nd row
Rear privacy-tinted glass	•	•	•

CLIMATE			
Climate control	Dual-zone automatic climate control with humidity control and air-filtration system	Dual-zone automatic climate control with humidity control and air-filtration system	Dual-zone automatic climate control with humidity control and air-filtration system

LIGHTING			
Ambient lighting	White		
Iconic Drive™ ambient lighting		•	•

MISCELLANEOUS			
Auto-dimming rearview mirror	•	•	•
Driver's and front passenger's illuminated vanity mirrors	•	•	•
A-SPEC™ interior Sport Appearance Package		•	•
Active Noise Cancellation (ANC)	•	•	•
Active Sound Control (ASC)	•	•	•

STORAGE			
Door pocket storage	•	•	•
Seatback pockets	Driver, passenger	Driver, passenger	Driver, passenger
Hidden cargo storage	•	•	•

AUDIO & CONNECTIVITY

AUDIO			
Acura Premium Audio System	•		
ELS Studio® 3D Premium Audio System		•	•
Speakers	9	16, including subwoofer	16, including subwoofer
Speed-Sensitive Volume Control (SVC)	•	•	•

MISCELLANEOUS			
10.2" HD centre display	•	•	•
True Touchpad Interface™	•	•	•
Apple CarPlay® ²⁰ / Android Auto™ ^{4,21}	Wired/wireless	Wired/wireless	Wired/wireless
HD Radio™	•	•	•
SiriusXM™ ²²	•	•	•
Bluetooth® Streaming Audio ²³	•	•	•
Amazon Alexa Built-in ²⁴	•	•	•
Acura Navigation System ²⁵ with 3D view		•	•
HomeLink® ²⁶	•	•	•
Wi-Fi hotspot capability ²⁷	•	•	•
AcuraLink® ²⁸ Connected Services	•	•	•
7" meter display	•	•	•
USB device connectors ²²	1 USB-A 2.5A (Front console) 1 USB-C 3.0A (Front)	1 USB-A 2.5A (Front console) 1 USB-C 3.0A (Front) 2 USB-C 3.0A (2nd row)	1 USB-A 2.5A (Front console) 1 USB-C 3.0A (Front) 2 USB-C 3.0A (2nd row)
Wireless phone charger (Qi-compatible)		•	•
12-volt power outlet	Front console	Front console	Front console, cargo area

DIMENSIONS

EXTERIOR	RDX	RDX A-SPEC™	RDX PLATINUM ELITE A-SPEC™
Curb weight (kg)	1800	1820	1844
Gross vehicle weight rating (kg)	2280	2280	2280
Height (mm)	1667.8	1667.8	1667.8
Length (mm)	4766	4766	4766
Track – front/rear (mm)	1631 / 1643	1631 / 1643	1631 / 1643
Wheelbase (mm)	2750	2750	2750
Width (mm)	1900	1900	1900
INTERIOR			
Cargo volume – 2nd-row folded standard ²⁹ /maximum ³⁰ (L)	1668 / 2260	1668 / 2260	1668 / 2260
Cargo volume – standard ²⁹ /maximum ³⁰ (L)	835 / 881	835 / 881	835 / 881
Headroom – front/rear (mm)	1007 / 974	1007 / 974	1007 / 974
Hip room – front/rear (mm)	1397 / 1267	1397 / 1267	1397 / 1267
Passenger volume (L)	2945	2945	2945
Shoulder room – front/rear (mm)	1517 / 1437	1517 / 1437	1517 / 1437
Legroom – front/rear (mm)	1057 / 975	1057 / 975	1057 / 975

1. Horsepower and torque calculations reflect SAE net, Rev. 08/04, SAE J1349 procedures.
2. Accessory towing package required. Packages are available at an additional cost as a dealer-installed item. See your Owner's Manual for proper towing operation.
3. Estimated fuel consumption based on Government of Canada's 5-cycle testing method. Your actual fuel consumption will vary based on driving habits and other factors – use for comparison only. For more information on 5-cycle testing, visit <http://vehicles.nrcan.gc.ca>.
4. None of the features we describe are intended to replace the driver's responsibility to exercise due care while driving. Drivers should not use handheld devices or operate certain vehicle features unless it is safe and legal to do so. Some features have technological limitations. These product and feature disclaimers are intended to provide a general overview of feature information, restrictions and limitations. For more comprehensive product and feature information, limitations and restrictions, please refer to your vehicle's Owner's Manual.
5. Improper use of Adaptive Cruise Control (ACC) with Low-Speed Follow (LSF) can lead to a crash. Use the brake pedal whenever necessary, and always keep a safe distance between your vehicle and other vehicles. Use ACC with LSF only when driving on expressways or freeways and in good weather conditions. Exiting a vehicle that has been stopped while the ACC with LSF system is operating can result in the vehicle moving without operator control which could result in serious injury or death. Do not use ACC with LSF in conditions including: in poor visibility; when you must slow down and speed up repeatedly; on winding roads; when you enter a toll gate, interchange, service area, parking area, etc.; on a slippery road; when a spare tire is installed; or when going down a steep hill.
6. Accuracy of the Blind Spot Information (BSI) system will vary based on weather, size of object and speed, and may not detect all relevant traffic. Do not rely only on BSI system when changing lanes. Always look in your mirrors, to either side of your vehicle, and behind you for other vehicles before changing lanes.
7. The Collision Mitigation Braking System (CMBS) is designed to reduce the severity of an unavoidable collision. CMBS does not prevent collisions nor stop the vehicle automatically and may not activate or detect a vehicle in certain circumstances. It is still your responsibility to operate the brake pedal and steering wheel appropriately according to the driving conditions. System operation affected by extreme interior heat.
8. Do not solely rely on the Rear Cross Traffic Monitor system. Always also use your mirrors, and look behind and to the sides of your vehicle before reversing.
9. Forward Collision Warning (FCW) cannot detect all objects ahead and may not detect a given object; accuracy will vary based on weather, speed and other factors. System operation affected by extreme interior heat. FCW does not include a braking function. Driver remains responsible for safely operating vehicle and avoiding collisions.
10. Lane Departure Warning (LDW) only alerts drivers when lane drift is detected without a turn signal in use. LDW may not detect all lane markings or lane departures; accuracy will vary based on weather, speed and road condition. System operation affected by extreme interior heat. Driver remains responsible for safely operating vehicle and avoiding collisions.
11. The Lane Keeping Assist System (LKAS) is not a substitute for your vehicle control. Keep your hands on the steering wheel at all times. The LKAS may deactivate at any time and its accuracy will vary based on weather, speed, vehicle condition and road condition including condition and visibility of lane markings. System operation affected by extreme interior heat.
12. It is always your responsibility to keep the vehicle within your driving lane. The Road Departure Mitigation (RDM) system only alerts you when lane drift is detected without a turn signal in use. RDM may not detect all lane markings or lane departures; accuracy will vary based on weather, speed and lane marker condition. System operation affected by extreme interior heat.
13. Traffic Sign Recognition (TSR) cannot detect all traffic signs and may misidentify certain signs. Accuracy will vary based on weather and other factors. System operation affected by extreme interior heat. Driver remains responsible for safely operating vehicle and complying with all traffic regulations.
14. Feature uses rear door sensors only. Sensors are designed to detect if a rear door was opened and closed since the last time the vehicle was turned off. Sensors do not detect the presence of rear-seat passengers or other items. Always check rear seats before exiting the vehicle.
15. The Anti-lock Braking System (ABS) does not reduce the time or distance it takes to stop the vehicle. It only helps with steering control during hard braking. Always drive appropriately for the conditions.
16. The Vehicle Stability Assist (VSA) may not function properly if tire type and size are mixed. Make sure to use the same size and type of tire, and the air pressures as specified. VSA cannot enhance stability in all driving situations and does not control the entire braking system. Always drive appropriately for the conditions.
17. Visually confirm that it is safe to drive before backing up. Certain conditions (such as weather, lighting and high temperatures) may also restrict the rear view. Do not rely on the rearview display, which does not give you all information about conditions at the back of your vehicle.
18. Visually confirm that it is safe to drive before backing up or parking. Certain conditions (such as weather, lighting and high temperatures) may also restrict the camera view. Do not rely on the camera displays as they may not give you all information about conditions, persons, objects or obstructions around your vehicle.
19. Hill Start Assist may not prevent the vehicle from rolling downhill on a very steep or slippery slope, and will not operate on small inclines. Hill Start Assist is not a replacement for the parking brake.
20. Apple CarPlay is provided by Apple Inc. and only compatible with certain Apple devices and operating systems. Devices, cables and adapters are not included and must be purchased separately. Cellular data and/or voice charges may apply, including roaming charges and/or other amounts charged by your wireless carrier. Only use Apple CarPlay when conditions allow you to do so safely. Some laws prohibit the operation of electronic devices while operating a vehicle. Launch applications and perform other operations on electronic devices only when the vehicle is safely parked. Certain functionalities may be locked while vehicle is operational. Depending on use, Apple CarPlay can share certain user and vehicle information (e.g., vehicle location, speed and other operating conditions) with the connected iPhone. See Apple's privacy policy or contact Apple Inc. at www.apple.com for details regarding Apple's use and handling of data uploaded by Apple CarPlay. Use of Apple CarPlay is at user's own risk, and is subject to agreement to the Apple CarPlay terms of use, which are included as part of the Apple iOS terms of use. Apple CarPlay vehicle integration is provided "as is" and Honda cannot guarantee Apple CarPlay operability or functionality now or in the future due to, among other conditions, changes in Apple CarPlay software/Apple iOS, service interruptions, or incompatibility or obsolescence of vehicle-integrated hardware or software. See dealer for details. Apple and Apple CarPlay are trademarks of Apple Inc.
21. Android Auto is provided by Google Inc. and only compatible with certain Android devices and operating systems. Devices, cables and adapters are not included and must be purchased separately. Cellular data and/or voice charges may apply, including roaming charges and/or other amounts charged by your wireless carrier. Only use Android Auto when conditions allow you to do so safely. Some laws prohibit the operation of electronic devices while operating a vehicle. Launch applications and perform other operations on electronic devices only when the vehicle is safely parked. Certain functionalities may be locked while vehicle is operational. Depending on use, Android Auto can share certain user and vehicle information (e.g., vehicle location, speed and other operating conditions) with Google and its service providers. See Google privacy policy or contact Google Inc. at www.google.com for details regarding Google's use and handling of data uploaded by Android Auto. Use of Android Auto is at user's own risk, and is subject to agreement to the Android Auto terms of use, which are presented to the user when the Android Auto application is downloaded to the user's Android phone. Android Auto vehicle integration is provided "as is" and Honda cannot guarantee Android Auto operability or functionality now or in the future due to, among other conditions, changes in Android Auto software/Android operating system, service interruptions, or incompatibility or obsolescence of vehicle-integrated hardware or software. See dealer for details. Android and Android Auto are trademarks of Google Inc.
22. Only available in certain areas. Includes a no-charge trial of three months, beyond which service fees apply.
23. Only compatible with certain devices and operating systems. Devices, cables and adapters are not included and must be purchased separately.
24. Alexa Skills require Amazon account linking to use. Amazon, Alexa and all related logos are trademarks of Amazon.com, Inc. or its affiliates. Will need a paid data plan or tether from smartphone to activate commands. Functionality is subject to limitations of the cellular network provider.
25. Map Database of the Acura Navigation System covers major metropolitan areas in Canada and the 48 contiguous U.S. states. For a list of current, detailed coverage areas, refer to the Acura website, www.acura.ca.
26. HomeLink® can be programmed with codes of up to three remote-control devices (e.g., garage-door opener, home security system, etc.). Additional control devices not provided by Acura may be required.
27. New vehicles are equipped with a complimentary AT&T 90-day or 3 GB data trial period, whichever comes first, which must be redeemed/activated by setting up an AT&T account within the first 90 days of eligible vehicle purchase or lease (as applicable). After the trial period, AT&T and Bell Mobility have partnered to enable Bell Mobility to support in-vehicle Wi-Fi® Hotspot connectivity in Canada. Contact AT&T or visit www.myvehicle.att.com to purchase available data plans after the trial period has ended. The availability of certain GPS satellite and/or cellular networks is required for Wi-Fi® Hotspot to operate properly. Service interruptions may occur and/or vehicle system upgrades may be required if cellular network availability is compromised. 4G LTE connection speeds may vary by region. Wi-Fi is a registered trademark of Wi-Fi Alliance®.
28. Subscription required. Complimentary trial – One year complimentary subscription to AcuraLink Remote package included, after which fees, taxes and other charges will apply in order to continue subscription. The availability of certain cellular networks is required for AcuraLink to operate properly. Service interruptions may occur and/or vehicle system upgrades may be required if cellular network availability is compromised. Ask your dealer for full terms and conditions.
29. Based on SAE J1100 cargo volume measurement standard.
30. Based on SAE J1100 cargo volume measurement standard, plus rear footwell space and front seats moved forward.

COLOURS

EXTERIOR



Apex Blue Pearl



Liquid Carbon Metallic



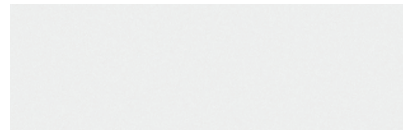
Urban Grey Pearl



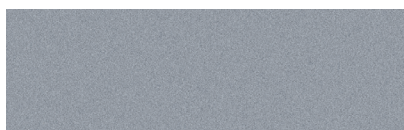
Majestic Black Pearl



Performance Red Pearl



Platinum White Pearl



Solar Silver Metallic

INTERIOR



Ebony Leatherette



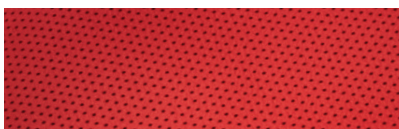
Ebony Leather with Ultrasuede® insert



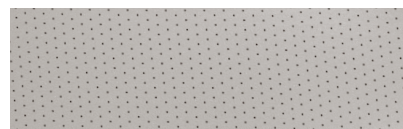
Ebony Perforated Leather



Red Leather with Ebony Ultrasuede® insert



Red Perforated Leather



Orchid Perforated Leather

EXTERIOR/INTERIOR COLOURS	RDX	RDX A-SPEC™	RDX PLATINUM ELITE A-SPEC™
Platinum White Pearl	Ebony Leatherette	Ebony Leather with Ultrasuede® insert or Red Leather with Ebony Ultrasuede® insert	Ebony Perforated Leather or Red Perforated Leather
Liquid Carbon Metallic		Ebony Leather with Ultrasuede® insert or Red Leather with Ebony Ultrasuede® insert	Ebony Perforated Leather or Red Perforated Leather
Majestic Black Pearl	Ebony Leatherette	Ebony Leather with Ultrasuede® insert or Red Leather with Ebony Ultrasuede® insert	Ebony Perforated Leather or Red Perforated Leather
Urban Grey Pearl		Ebony Leather with Ultrasuede® insert or Red Leather with Ebony Ultrasuede® insert	Ebony Perforated Leather or Red Perforated Leather
Solar Silver Metallic	Ebony Leatherette	Ebony Leather with Ultrasuede® insert	Ebony Perforated Leather
Apex Blue Pearl		Ebony Leather with Ultrasuede® insert	Ebony Perforated Leather or Orchid Perforated Leather
Performance Red Pearl		Ebony Leather with Ultrasuede® insert	Ebony Perforated Leather